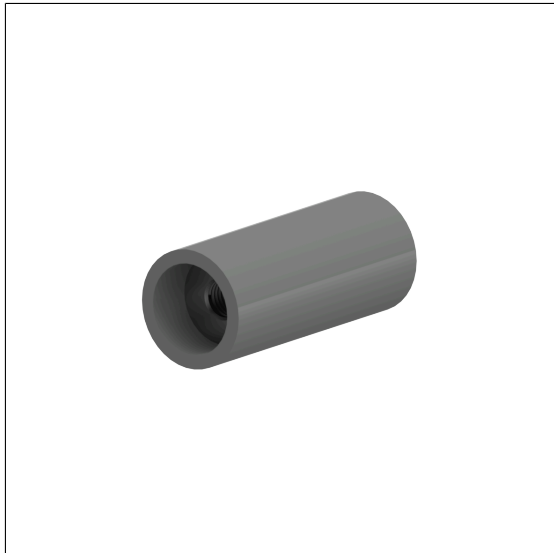


## Care Solutions · Nylon Partition solutions

Nylon Coupling piece

Article number: 0289330018

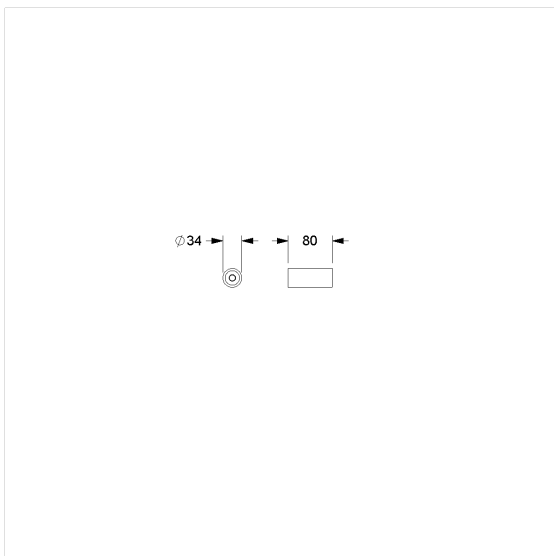
### Product image



### Technical specifications

Product group	2600
Product	Coupling piece
Short name	NY.KL
Length	80 mm
Width	34 mm
Height	34 mm
Diameter	34 mm
Material	polyamide
Surface	high gloss
Colour	available in nylon colours

### Technical drawing



### Product description

- Design partition solutions for doors and partitions made of HPL board material
- Single part for upper belt
- can be used before wall connection to brace the top chord or as a connecting link between several long tube elements
- M12 female thread on both sides
- corrosion protected
- the steel tube engages 12 mm, the threaded rod 30 mm into the coupling piece

