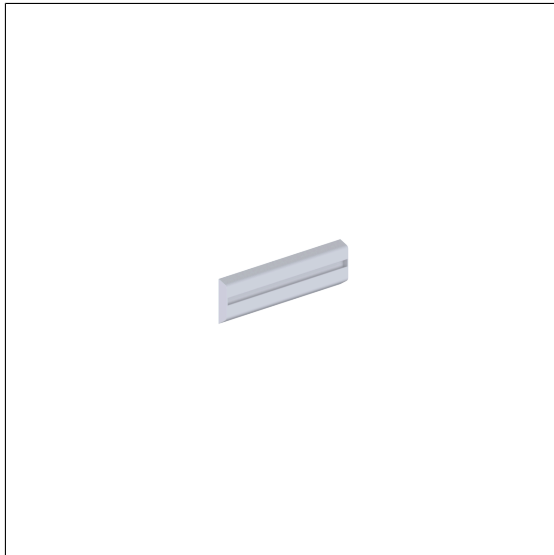


Care Solutions · Cavere Care Accessories

Cavere Care FlexRail

Article number: 7100001092

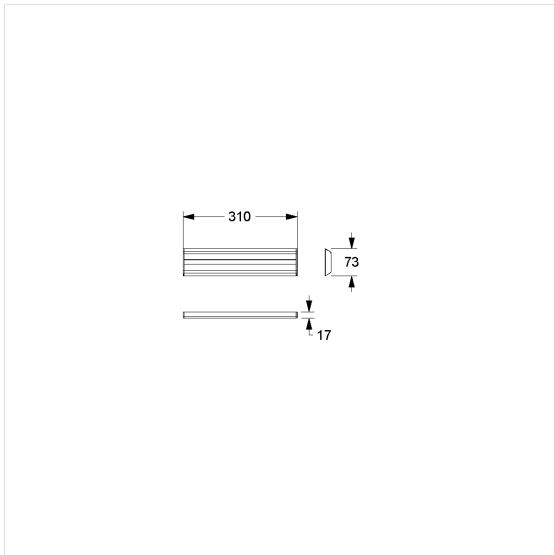
Product image



Technical specifications

Product group	7010
Product	FlexRail
Length	310 mm
Width	73 mm
Height	17 mm
Material	aluminium
Surface	scratch-resistant powder coating with antibacterial protection (except 091 Carbon black)
Colour	available in Cavere colours

Technical drawing



Product description

- Cavere FlexCare as modular rail system for accessories
- basic element necessary for mounting Cavere FlexCare Accessoires
- available space for accessories for mounting: total length minus 10 mm
- with end caps
- concealed screw fixing
- with base bar, for wall fixing
- can also be attached to tiles without drilling using the glue fixing set 7100006
- FlexRail with glue technology max. loading permitted: 4kgs
- recommended order quantity:
 - 1 glue fixing set (FlexRail 300 mm)
 - 2 glue fixing sets (FlexRail 660 mm)
 - 3 glue fixing sets (FlexRail 900 mm)
- supplied with stainless steel Torx screw $\varnothing 8 \times 80$ mm and plugs



Antibac



091 092 093 095 096