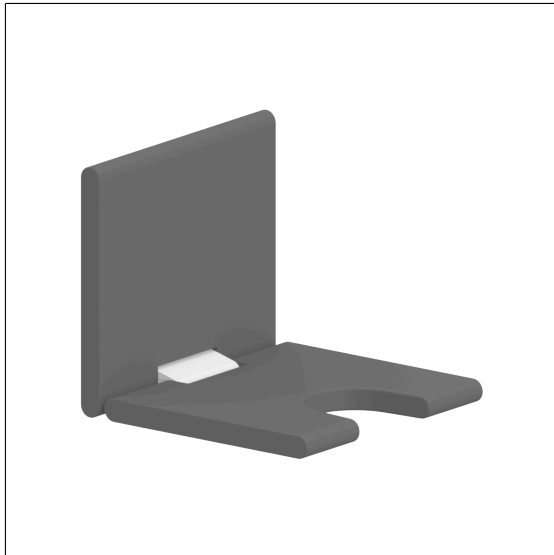


Care Solutions · Nylon Care 400

Nylon Care 400 Hanging seat,
with hygiene recess

Article number: 0847919019

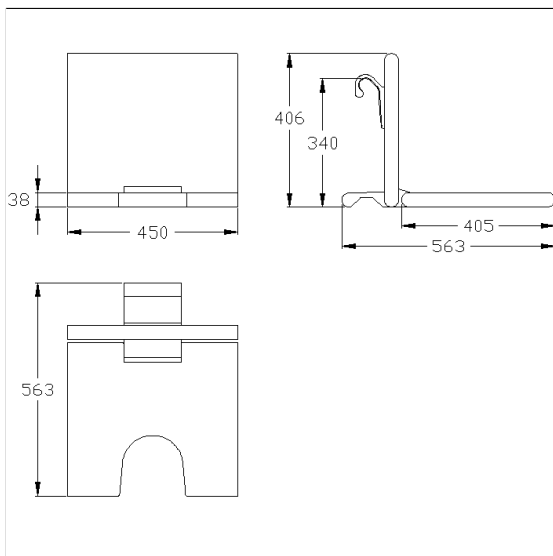
Product image



Technical specifications

Product group	2000
Product	Hanging seat, with hygiene recess
Length	450 mm
Height	406 mm
Width	563 mm
Material	aluminium, padded made of PUR integral foam
Surface	scratch-resistant powder coating with antibacterial protection
Colour	available in White (019), Cavere Metallic anthracite (095) and Cavere Metallic silver (096), padded, colour black
Loading	max. 150 kgs

Technical drawing



Product description

- Nylon Care - a well-tried and proven product family with a wide range of variants, three product series suiting many different requirements
- for hanging in Cavere Care Shower handrails
- for hanging in Inox Care and Nylon Care Shower handrails
- Pad with non-corrosive metal core throughout,
- with adjustable brake
- locked in place in vertical position
- with non-corrosive steel core throughout
- steel reinforced hinges
- with adjustable brake
- locked in place in vertical position
- for top edge of shower handrail 770-800mm
- for top edge of shower handrail 850mm the seat height corresponds 460 mm (DIN18040 und ÖNORM B1600)
- retrofittable with armrest 7843100

