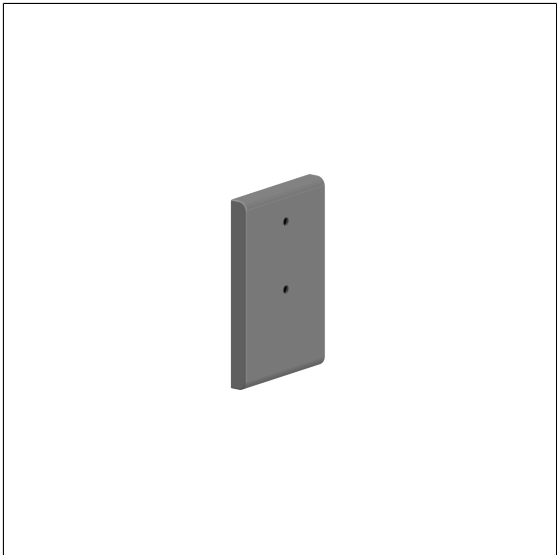




Care Solutions

Nylon Care Mounting plate
Article number: 4448260018

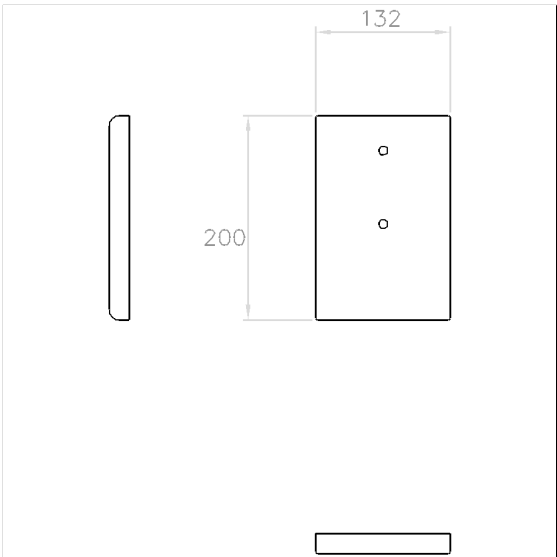
Product image



Technical specifications

Product group	2000
Product	Mounting plate
Length	132 mm
Width	20 mm
Height	200 mm
Material	polyamide
Surface	high gloss with antibacterial protection
Type of wall	in front of the wall with panels without backfill and lightweight partition walls
Colour	available in Dark grey (018) and White (019)

Technical drawing



Product description

- Nylon Care - a well-tried and proven product family with a wide range of variants, three product series suiting many different requirements
- suitable for:
 - Inox Care lift-up shower seats
 - Nylon Care 400 lift-up shower seats
 - Nylon Care 300 lift-up shower seats and shower guard rail
- concealed screw fixing
- with non-corrosive steel core throughout
- Supplied with mounting material for fixing the hinge to the mounting plate
- The mounting set for fixing the mounting plate to the wall is not included in the scope of delivery and must be determined according to the wall condition and ordered separately



Antibac



018 019