

Nylon Care Lift-up support rail vario,
with toilet roll holder and floor support

Article number: 3500930016

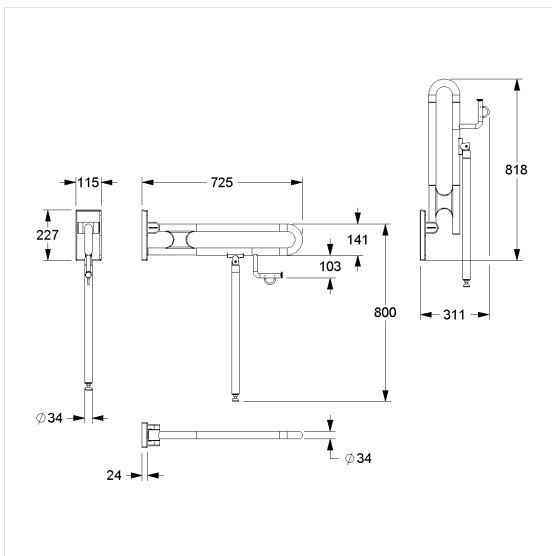
Product image



Technical specifications

| | |
|---------------|---|
| Product group | 3800 |
| Product | Lift-up support rail, with toilet roll holder and floor support |
| System | vario, with base plate |
| Length | 725 mm |
| Fixing height | 800 mm |
| Diameter | 34 mm |
| Material | polyamide, base plate, made of stainless steel |
| Surface | high gloss |
| Colour | available in nylon colours |
| Version | left and right |
| Loading | max. 100 kgs |

Technical drawing



Product description

- Nylon Care - a well-tried and proven product family with a wide range of variants, three product series suiting many different requirements
- with adjustable brake
- with durable maintenance-free, friction bearings
- with non-corrosive steel core throughout
- space-saving thanks to compact design
- floor support with non-slip floor contact
- with paper roll holder with maintenance free roll brake
- easy installation or removing by connecting / disconnecting to base plate
- Floor support serves as a support in case of insufficient wall condition, thus the resulting forces on the wall fixing can be reduced
- concealed screw fixing
- sealing of the drilling points (DIN 18534-1) in conjunction with NORMBAU fixing sets 7470xxx
- In case of lightweight partition walls a backfill made of min. 30mm hardwood is needed
- certified by TÜV PRODUCT SERVICE
- load capacity: max. 100kgs according to ISO17966:2016, statically tested up to 150kgs
- produced in accordance with Regulation (EU) 2017/745 on medical devices
- CE-certified
- meets the requirements of German standard DIN 18040 and Austrian standard ÖNORM B 1600
- Fixing set has to be determined according to conditions on site, is to be ordered separately

