

# Product data sheet

## Care Solutions

Nylon Care Lift-up support rail vario,  
with toilet roll holder and floor support

Article number: 4500730019

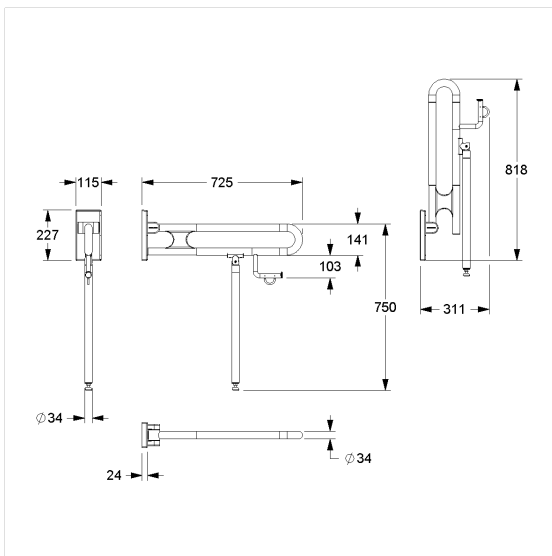
### Product image



### Technical specifications

Product group	3800
Product	Lift-up support rail, with toilet roll holder and floor support
System	vario, with base plate
Length	725 mm
Fixing height	750 mm
Diameter	34 mm
Material	polyamide, base plate, made of stainless steel
Surface	high gloss with antibacterial protection
Colour	available in Dark grey (018) and White (019)
Version	left and right
Loading	max. 100 kgs

### Technical drawing



### Product description

- Nylon Care - a well-trying and proven product family with a wide range of variants, three product series suiting many different requirements
- with adjustable brake
- with durable maintenance-free, friction bearings
- with non-corrosive steel core throughout
- space-saving thanks to compact design
- floor support with non-slip floor contact
- with paper roll holder with maintenance free roll brake
- easy installation or removing by connecting / disconnecting to base plate
- Floor support serves as a support in case of insufficient wall condition, thus the resulting forces on the wall fixing can be reduced
- concealed screw fixing
- sealing of the drilling points (DIN 18534-1) in conjunction with NORMBAU fixing sets 7470xxx
- In case of lightweight partition walls a backfill made of min. 30mm hardwood is needed
- certified by TÜV PRODUCT SERVICE
- load capacity: max. 100kgs according to ISO17966:2016, statically tested up to 150kgs
- produced in accordance with Regulation (EU) 2017/745 on medical devices
- CE-certified
- meets the requirements of German standard DIN 18040 and Austrian standard ÖNORM B 1600
- Fixing set has to be determined according to conditions on site, is to be ordered separately

