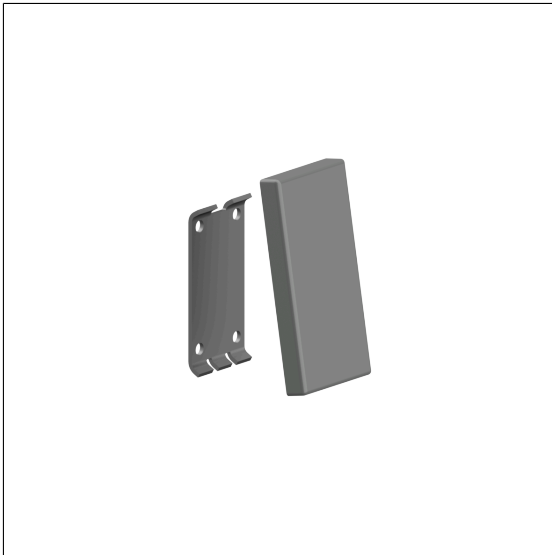


Care Solutions

Nylon Care Base plate vario,
with cover plate blind

Article number: 3501200018

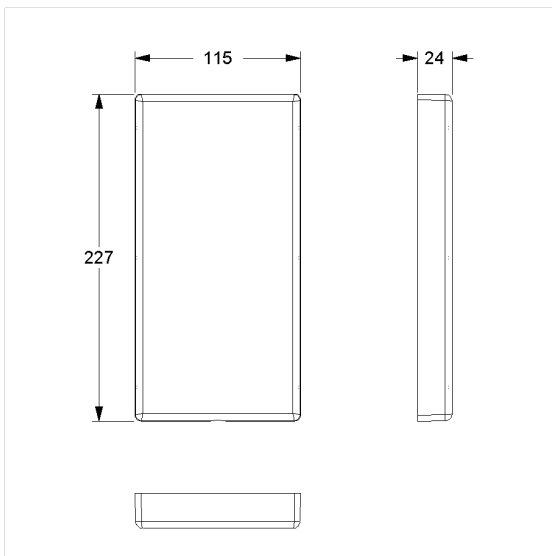
Product image



Technical specifications

Product group	3800
Product	Base plate, with cover plate blind
Length	227 mm
Width	115 mm
Height	24 mm
Material	polyamide, base plate made of stainless steel
Surface	high gloss
Colour	available in nylon colours

Technical drawing



Product description

- Nylon Care - a well-trying and proven product family with a wide range of variants, three product series suiting many different requirements
- base plate concealed by cover plate blind
- Preparation for later easy replacement of the cover plate blind with lift-up support rails vario, Wall-support handles vario and Lift-up shower seat vario
- not suitable for lift-up support rails with E-Button vario, connection covered with mounting plate
- Fixing set has to be determined according to conditions on site, is to be ordered separately



Vario

