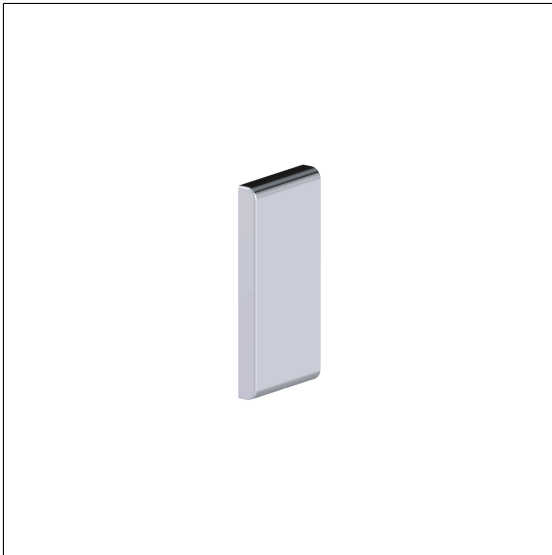


## Care Solutions · Inox Care

Inox Care Lift-up support rail vario,  
with cover plate blind

Article number: 2050200008

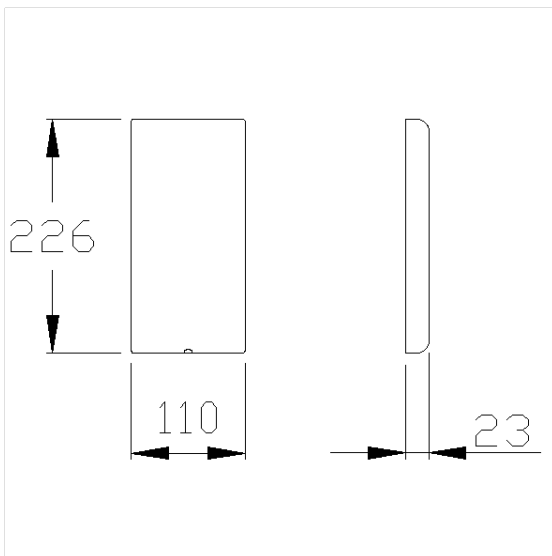
### Product image



### Technical specifications

Product group	5500
Product	Lift-up support rail, with cover plate blind
Length	226 mm
Width	110 mm
Height	23 mm
Material	stainless steel, material No. 1.4301 (A2, AISI 304)
Surface	high gloss
Colour	available in Mirror polished (008) and Satin (009)

### Technical drawing



### Product description

- Inox Care is a durable and versatile stainless steel range that combines accessibility and hygiene in a modern design
- sealing of the drilling points (DIN 18534-1) in conjunction with NORMBAU fixing sets 7470xxx



Vario



008 009