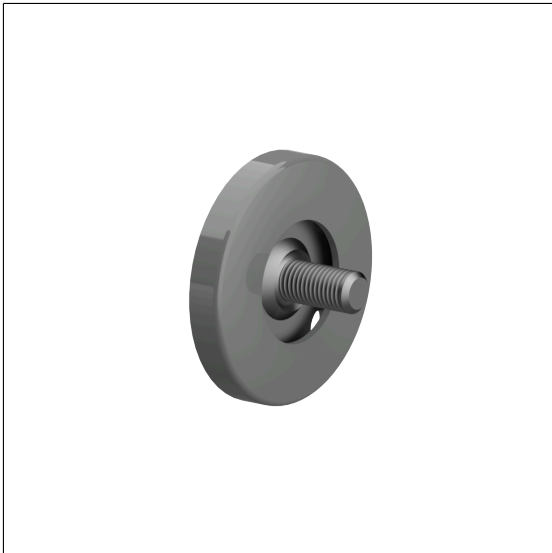


Care Solutions · Nylon Partition solutions

Nylon Wall fixing

Article number: 0289150018

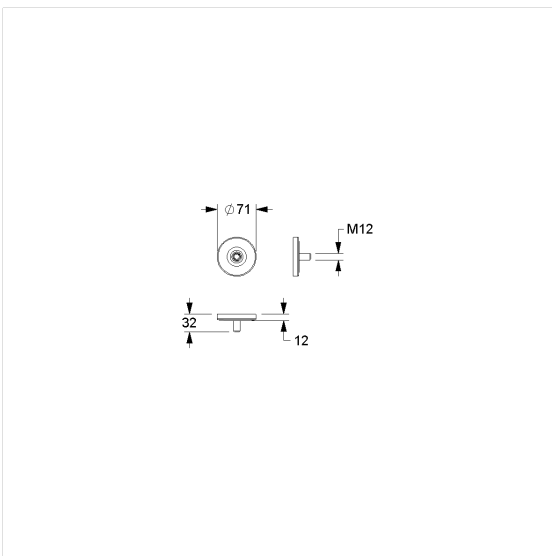
Product image



Technical specifications

Product group	2600
Product	Wall fixing
Short name	NY.WA
Length	71 mm
Width	71 mm
Height	32 mm
Material	polyamide
Surface	high gloss
Colour	available in nylon colours

Technical drawing



Product description

- Design partition solutions for doors and partitions made of HPL board material
- Single part for toprail
- for fixing of the toprail on the wall
- Consisting of rosette base and reinforced steel washer with welded countersunk screw M12 x 25 mm
- Nylon rosette top for concealed fixing
- for wall mounting screws $\varnothing 6 \times 70$ mm and dowels $\varnothing 8$ mm are recommended

