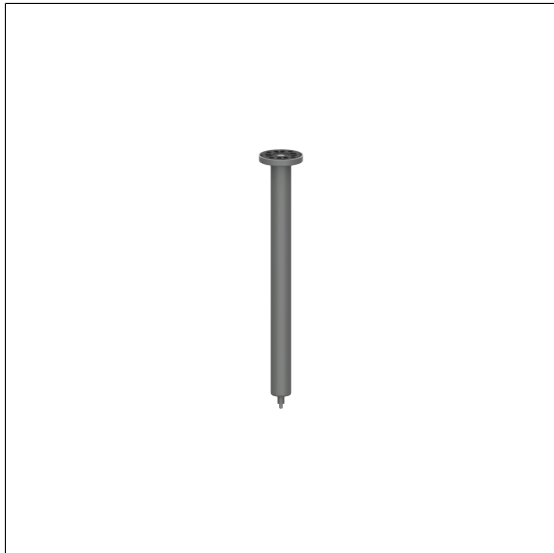


Nylon Care 400 Ceiling support

Article number: 4781110018

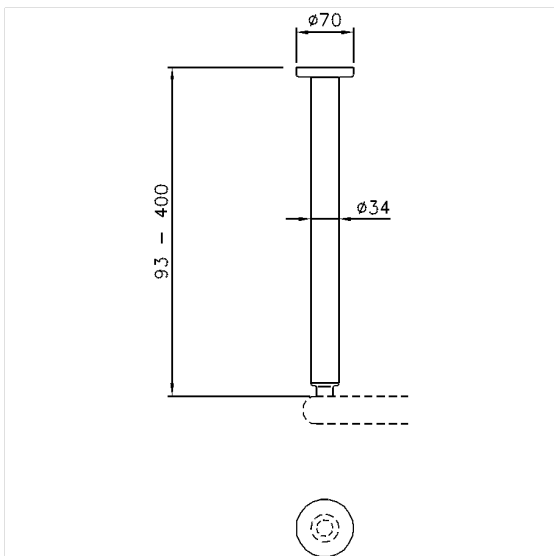
Product image



Technical specifications

Product group	1500
Product	Ceiling support
Length	93 - 400 mm
Material	polyamide
Surface	high gloss with antibacterial protection
Diameter	34 mm
Colour	available in colours Dark grey (018), White (019) and Manhattan (067)

Technical drawing



Product description

- Nylon Care - a well-trying and proven product family with a wide range of variants, three product series suiting many different requirements
- for Nylon Care 400 Shower curtain rails
- can be shortened (length)
- for fixing on connection thread of the shower curtain rail
- with plastic rose Ø 70mm for concealed screw fixing and glass fiber reinforced plastic base
- In case of lightweight partition walls a backfill made of min. 20mm hardwood is needed
- expandable with ceiling support for suspended ceiling 0300348 / 0300349
- supplied with stainless steel Torx screw sØ 6 x 70 mm and plugs



Antibac



018 019 067